

# Kathy Kilpatrick

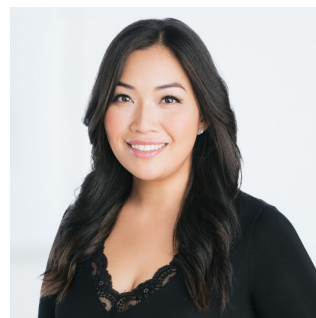
Paralegal

---

## PROFESSIONAL BACKGROUND

Kathy Kilpatrick is a Paralegal in the Insurance Practice Group at Singleton Urquhart Reynolds Vogel LLP.

Kathy began her career in 2010 as a legal assistant in personal injury litigation, and later stepped into a paralegal role in the areas of commercial litigation and ICBC defence. She has acquired extensive knowledge and experience in the area of insurance litigation with a focus on bodily injury claims.



Insurance

(604) 673-7474

[kkilpatrick@singleton.com](mailto:kkilpatrick@singleton.com)

---

## EDUCATION

- Paralegal Program, Capilano University, 2019
- Legal Administrative Assistant Certificate, Capilano University, 2009